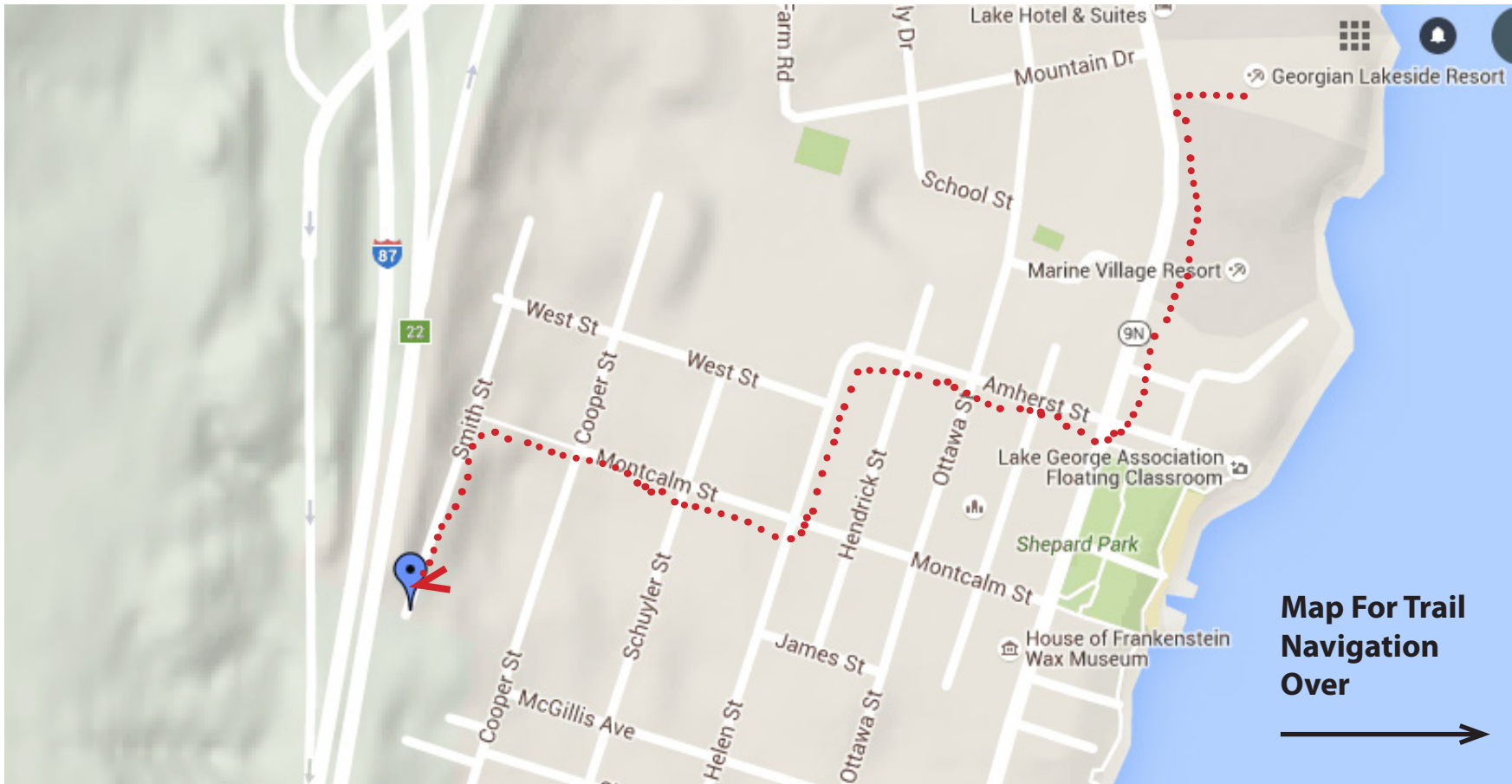


# Directions to Prospect Mt. Trailhead

## Prospect Mt. Trail Description

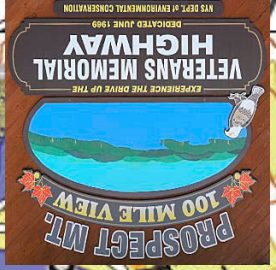
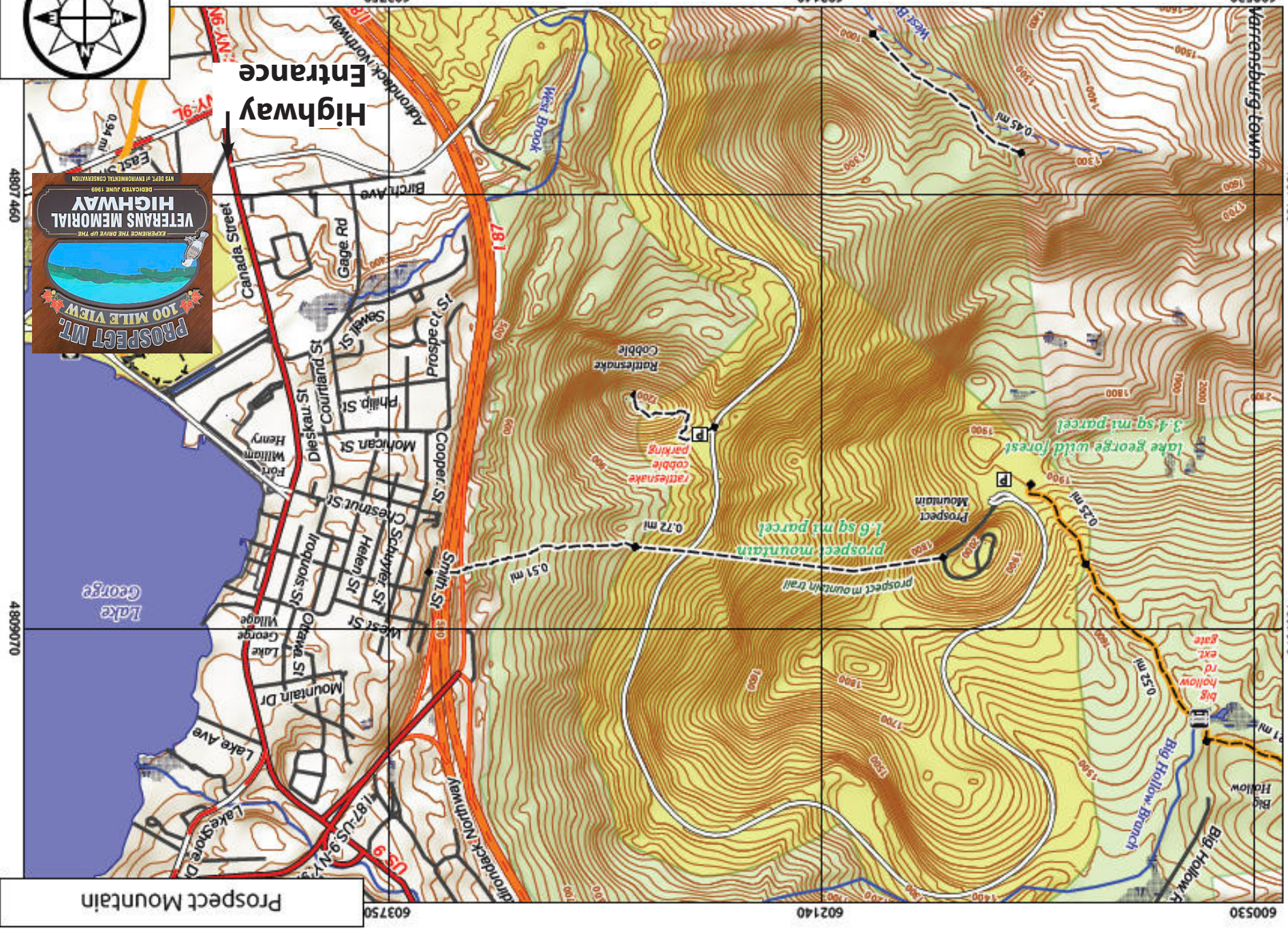
This red-marked 1-5/8 mile trail leads to summit of Prospect Mountain. To reach the trail from Lake George Village, turn west on Montcalm Street (away from lake) to Smith Street; turn south 1/2 block to trail head sign. Trail crosses 1-87 on an elevated walkway. The climb to the summit is not difficult. One part of the trail follows the road bed of an old funicular railway that served a once-thriving summer hotel on the mountain. Remains of both the mountain and the railroad still exist. Prospect is also home to the Veteran's Memorial Highway (<http://www.dec.ny.gov/outdoor/9176.html>) (\$10/car, 10AM - 6PM, last ticket 6PM must leave by 6:45). Map and trail guide for Prospect Mt. (<http://www.everytrail.com/guide/prospect-mountain-lake-george>). Link from [www.georgianresort.com](http://www.georgianresort.com) click on activities and attractions





Rendered: December 14, 2012 by Andy Arthur in GIS.  
 Map data parts, © OpenStreetMap contributors, CC BY-SA  
 NYSDC Data: DEM, Borders, ADK Wetlands, Trails, Assets

Grid = 1 mile, True North  
 UTM 18 / NAD 83



4807460

4809070

4807460

4809070

600530

602140

603750

600530

602140

603750

Prospect Mountain